



PIANC
The World Association for Waterborne
Transport Infrastructure

MarCom

Presented by
Mr Scott Keane

at the occasion of the PIANC APAC 2022.

1

MARCOM MEMBERS

- Egbert van der Wal (Chair)
- Babak Banijamali (Vice Chair)
- Noelia Gonzalez (Sec)
- Gildas Colleter (PTGCC Rep)

- 55 members from 25 countries across the globe
- MarCom also co-operates and communicates with other international organizations such as IMO, IAPH, IALA, IHMA, IAHR, IHO, IMPA, WODA, OCIMF.

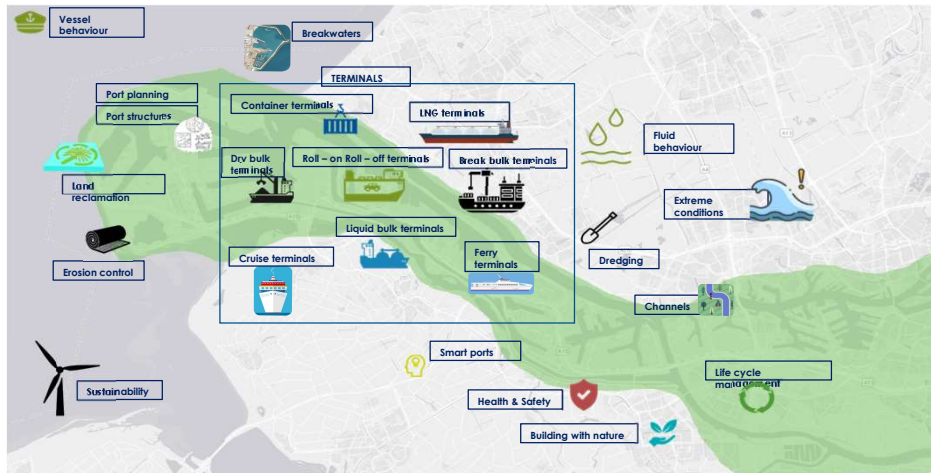
MarCom is responsible for dealing with maritime ports and navigation channels issues of interest to PIANC.



© PIANC APAC 2022

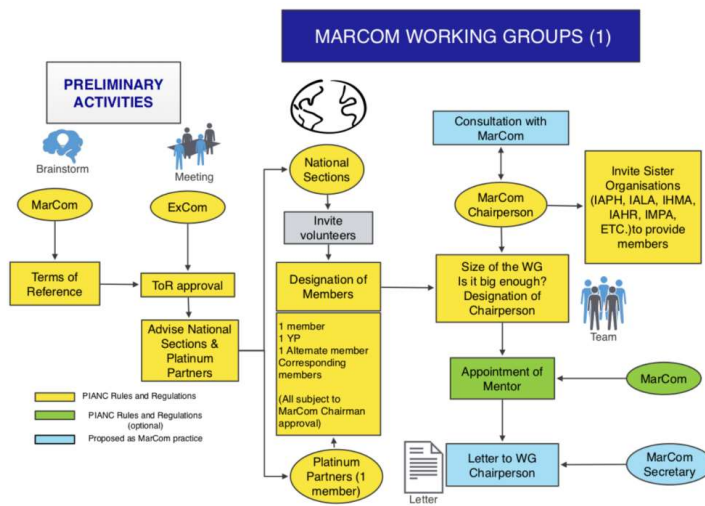
2

MARCOM IS ABOUT

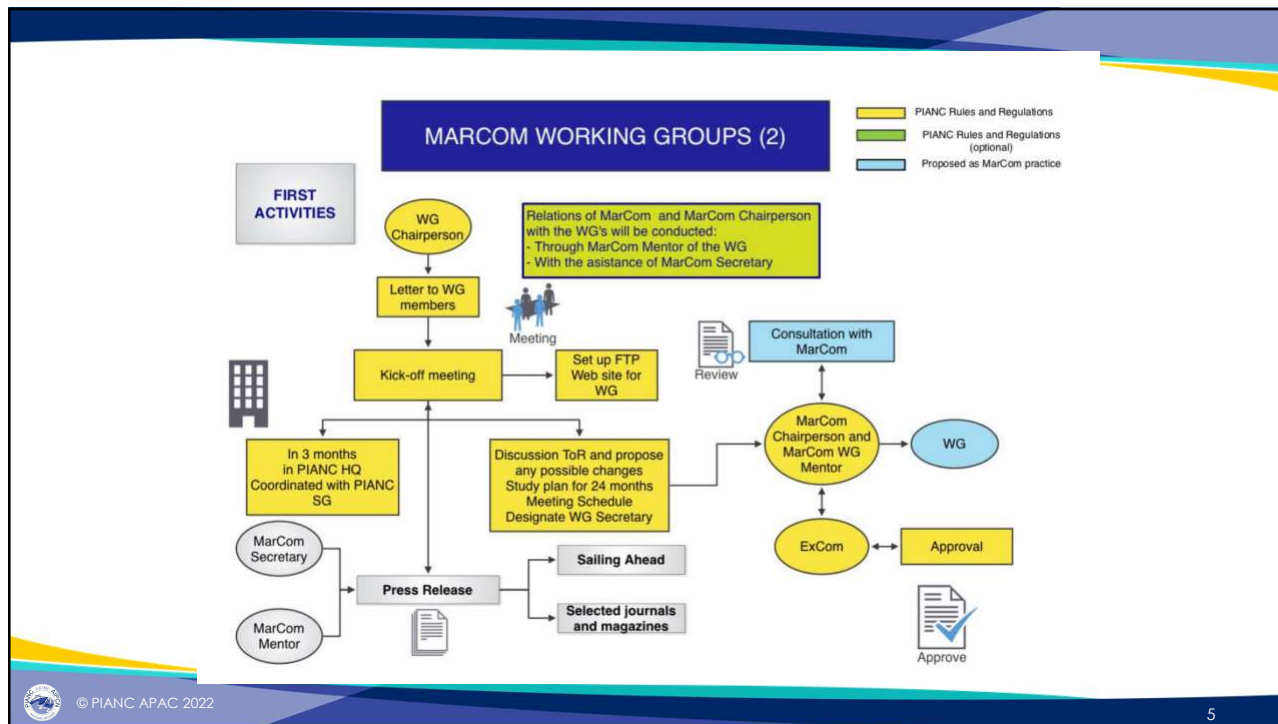


3

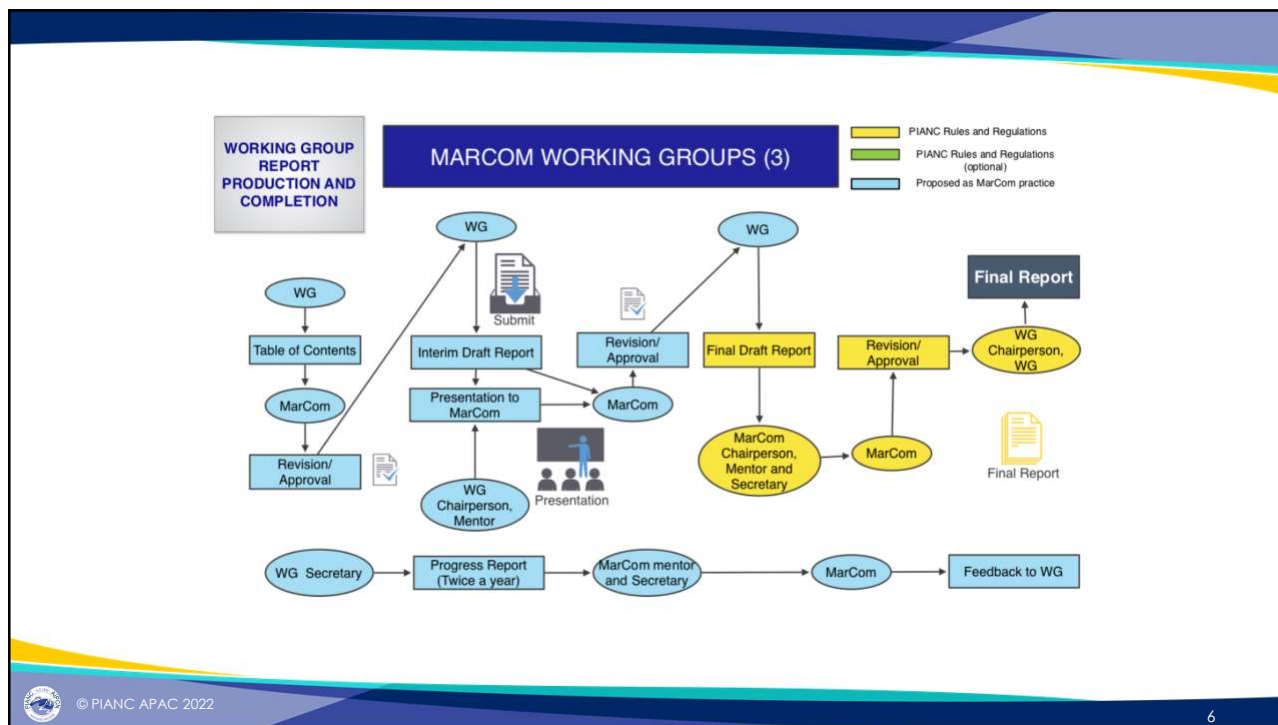
PROCESS



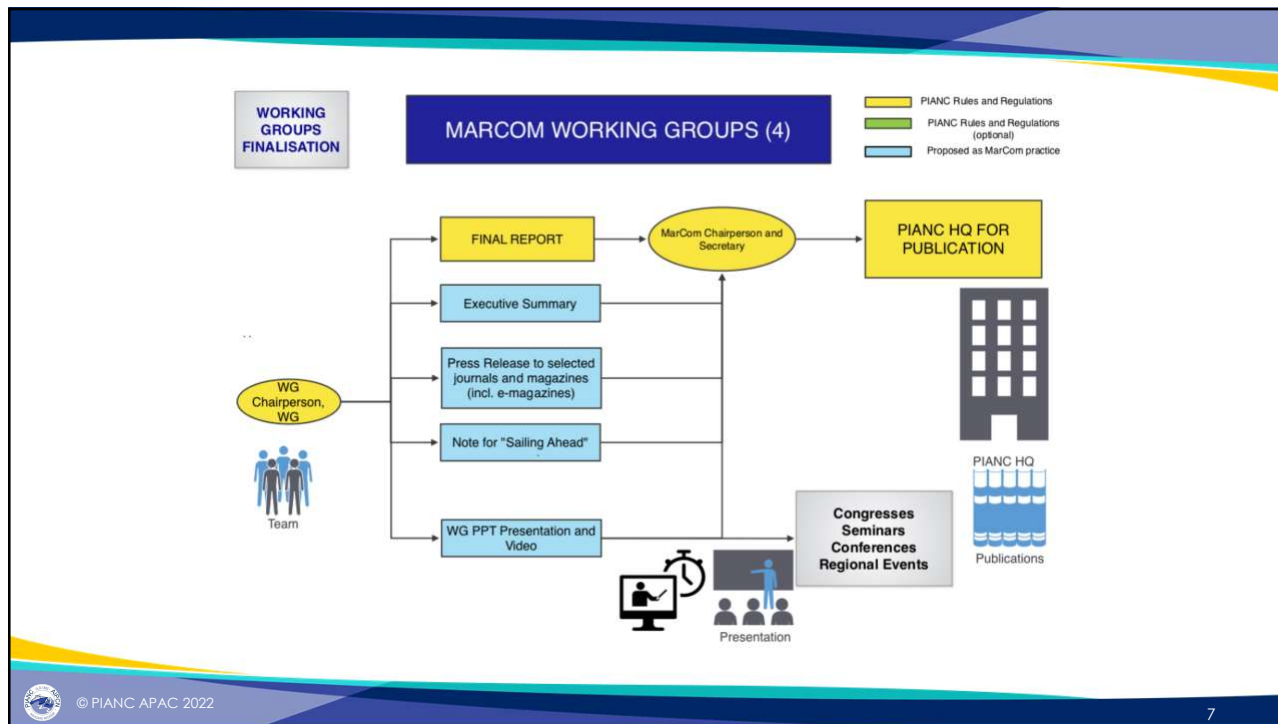
4



5



6



7

MARCOM LATEST REPORTS

PIANC MarCom WG Report n° 159 - 2019

RENEWABLES AND ENERGY EFFICIENCY FOR MARITIME PORTS

PIANC MarCom WG Report n° 184 - 2019

DESIGN PRINCIPLES FOR DRY BULK MARINE TERMINALS

PIANC MarCom WG Report n° 185 - 2019

PORTS ON GREENFIELD SITES - GUIDELINES FOR SITE SELECTION AND MASTERPLANNING

PIANC MarCom WG Report n° 208 - 2021

PLANNING FOR AUTOMATION OF CONTAINER TERMINALS

PIANC

BERTHING VELOCITY ANALYSIS OF SEAGOING VESSELS OVER 30,000 DWT

MarCom Working Group Report N° 148 - 2022

© PIANC APAC 2022

8

EXPECTED REPORTS TO FINISH IN 2022

- WG 153B Recommendations for the Design and assessment of Marine Oil, Gas and Petrochemical Terminals
- WG 167 Design of Terminals for Roro and RoPax Vessels
- WG 194 A Framework for Early Contractor Involvement in Marine Projects
- WG 200 Recommendations for the design and assessment of SPM and MPM facilities
- WG 205 Design and construction of breakwaters in soft seabeds
- WG 215 Accidental Impacts from Ships on Fixed Structures.
- WG 235 Ship Dimensions for planning and designing Marine Infrastructures.



9

WELL PROGRESSED REPORTS

- WG164: Upgrade of Port Terminals by increasing dredged depth;
- WG171: Ship Handling Simulation Dedicated to Channel and Harbour Design;
- WG180: Guidelines for protecting berthing structures from scour caused by ships (review);
- WG186: Mooring of Large Ships at Quay Walls;
- WG187: Protection of Undersea Pipelines and Cables in Navigable Areas;
- WG199: Health monitoring for Port and Waterway structures;
- WG211: Update of WG 33 – Guidelines for the design of fender systems;
- WG212: Update of WG 24 – Criteria for acceptable movement of ships at berths;
- WG213: Design guidelines for marine multipurpose terminals;



10

MARCOM NEW WORKING GROUPS



WG 224
"Planning of Fishing Ports"

MARCOM NEW WORKING GROUPS



WG 225 "Seismic Design Guidelines for Port Structures"

MARCOM NEW WORKING GROUPS



WG 231 "Mooring bollards & hooks: selection, maintenance and testing"



© PIANC APAC 2022

MARCOM NEW WORKING GROUPS



WG 232 "Metoccean-related risks during the construction of marine works"



© PIANC APAC 2022

MARCOM NEW WORKING GROUPS

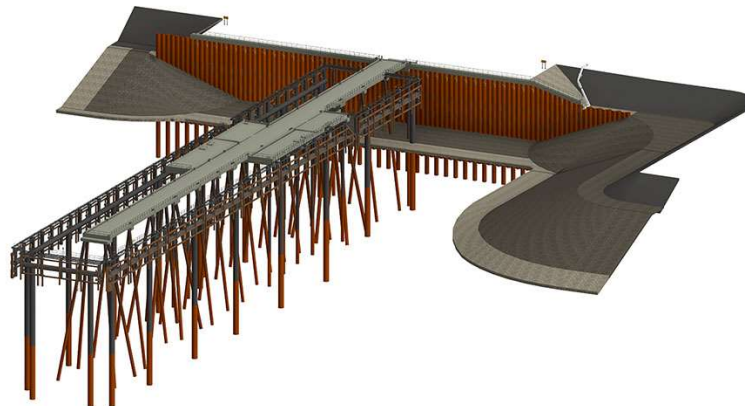


WG 233 "Inspection, maintenance and repair of waterfront facilities"



© PIANC APAC 2022

MARCOM NEW WORKING GROUPS



WG 238 "guidelines for use of BIM in infrastructure for ports and waterways"



© PIANC APAC 2022

MARCOM NEW WORKING GROUPS



WG 239 "Mitigation of tsunami disasters in ports"



© PIANC APAC 2022

MARCOM NEW WORKING GROUPS



WG 240 "Guidance for ports in small island countries"



© PIANC APAC 2022

MARCOM NEW WORKING GROUPS



WG 243 "Design, Maintenance and Sustainability of Container Terminal Pavements "

MARCOM NEW TOPICS

1. Temporary Task Group for A guideline for the planning and implementation of Shore Power Connections.
2. Safety by Design and Executions, Best practices and guidance for marine infrastructure projects.





PIANC
The World Association for Waterborne
Transport Infrastructure

Thank you for your attention.

For more information visit us at
www.pianc.org
or join us on

   YouTube